

VOLLEYBALL

- 14 CUSTOM MATCH DAY
- 18 MEN
- 25 WOMEN
- 30 KNEEPADS
- 31 BALLS

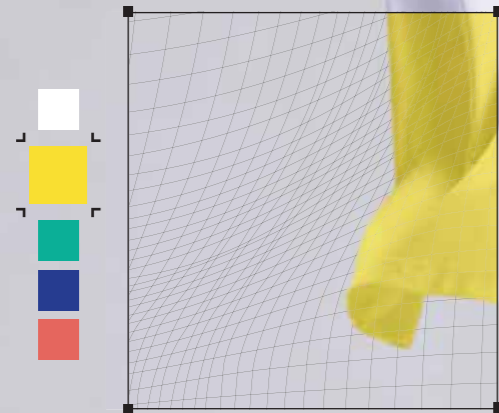


CUSTOM MATCH DAY VOLLEYBALL



+ Choose the font in which to write name and number.
Scegli il carattere con cui scrivere nome e numero.

+ Select a template.
Seleziona un template.



+ Change the colour by selecting from the various shades available.
Modifica il colore selezionando tra le varie tonalità disponibili.

F FIXED DESIGN

Discover the full collection on the **APP My Macron KIT - CUSTOM**
Scopri l'offerta completa sulla **APP My Macron KIT - CUSTOM**



O OPEN DESIGN

Create your own design from scratch by contacting your Customer Experience Account.
Crea il tuo design da zero contattando il tuo Customer Experience Account.



O OPEN DESIGN 800000660000 **F** FIXED DESIGN 800000670000

NATIU ECO CUSTOM ECOPERFORMANCE SYSTEM

MATCH DAY ECO SHIRT

ECO GOTEX: 100% POLYESTER (RECYCLED)

SR	M	L	XL	2XL	3XL	4XL	5XL
JR	5XS	4XS	3XS	2XS	XS	S	

OPEN DESIGN
€ 61,60 + TAX

FIXED DESIGN
€ 56,25 + TAX

> V-neck with piping
> Piping on front yoke

> Collo a "V" con piping
> Piping su carrè davanti

AVAILABLE UNTIL **2026**
New model available from 2027.
Nuovo modello disponibile dal 2027.



O OPEN DESIGN 800000680000 **F** FIXED DESIGN 800000690000

GHIBLE ECO CUSTOM ECOPERFORMANCE SYSTEM

MATCH DAY ECO SHIRT

ECO DIGITEX: 92% POLYESTER (RECYCLED) - 8% ELASTAN

SR	M	L	XL	2XL	3XL	4XL	5XL
JR	5XS	4XS	3XS	2XS	XS	S	

OPEN DESIGN
€ 61,60 + TAX

FIXED DESIGN
€ 56,25 + TAX

> V-neck with piping
> Piping on front yoke

> Collo a "V" con piping
> Piping su carrè davanti

AVAILABLE UNTIL **2026**
New model available from 2027.
Nuovo modello disponibile dal 2027.

BODY FIT



O OPEN DESIGN 800001180000

PINTO ECO CUSTOM ECOPERFORMANCE SYSTEM

MATCH DAY ECO SHORTS

ECO FIGHTEX: 100% POLYESTER (RECYCLED)

SR	M	L	XL	2XL	3XL	4XL	5XL
JR	5XS	4XS	3XS	2XS	XS	S	

OPEN DESIGN
€ 45,60 + TAX

AVAILABLE UNTIL **2026**
New model available from 2027.
Nuovo modello disponibile dal 2027.

WOMAN FIT



O OPEN DESIGN 800000620000 **F** FIXED DESIGN 800000630000

KLEFFA ECO CUSTOM ECOPERFORMANCE SYSTEM

MATCH DAY ECO SHIRT

ECO GOTEX: 100% POLYESTER (RECYCLED)

SR	M	L	XL	2XL	3XL	4XL	5XL
JR	5XS	4XS	3XS	2XS	XS	S	

OPEN DESIGN
€ 61,60 + TAX

FIXED DESIGN
€ 56,25 + TAX

> V-neck with piping
> Piping on front yoke

> Collo a "V" con piping
> Piping su carrè davanti

AVAILABLE UNTIL **2026**
New model available from 2027.
Nuovo modello disponibile dal 2027.



OPEN DESIGN 80000640000 FIXED DESIGN 80000650000

SKITTI ECO CUSTOM

ECOPERFORMANCE SYSTEM

MATCH DAY ECO SHIRT

ECO DIGITEX: 92% POLYESTER (RECYCLED) - 8% ELASTAN

SR	M	L	XL	2XL	3XL	4XL	5XL	OPEN DESIGN	FIXED DESIGN
JR	5XS	4XS	3XS	2XS	XS	S		€ 61,60 + TAX	€ 56,25 + TAX

› V-neck with piping
› Piping on front yoke

› Collo a "V" con piping
› Piping su carrè davanti

BODY FIT

AVAILABLE UNTIL 2026

New model available from 2027.
Nuovo modello disponibile dal 2027.



OPEN DESIGN 800001200000 FIXED DESIGN 800001190000

TUNGSTEN ECO CUSTOM

ECOPERFORMANCE SYSTEM

MATCH DAY ECO SHIRT

ECO DIGITEX: 92% POLYESTER (RECYCLED) - 8% ELASTAN

SR	M	L	XL	2XL	3XL	4XL	5XL	OPEN DESIGN	FIXED DESIGN
JR	5XS	4XS	3XS	2XS	XS	S		€ 61,60 + TAX	€ 56,25 + TAX

BODY FIT

AVAILABLE UNTIL 2026

New model available from 2027.
Nuovo modello disponibile dal 2027.



OPEN DESIGN 800000720000

OSMIUM EVO ECO CUSTOM

ECOPERFORMANCE SYSTEM

MATCH DAY ECO SHORTS

ECO DIGITEX: 92% POLYESTER (RECYCLED) - 8% ELASTAN

SR	M	L	XL	2XL	3XL	4XL	5XL	OPEN DESIGN
JR	5XS	4XS	3XS	2XS	XS	S		€ 45,60 + TAX

BODY FIT



OPEN DESIGN 800000720000

ROXY ECO CUSTOM

ECOPERFORMANCE SYSTEM

MATCH DAY ECO SHORTS

ECO DIGITEX: 92% POLYESTER (RECYCLED) - 8% ELASTAN

SR	M	L	XL	2XL	3XL	4XL	5XL	OPEN DESIGN
JR	5XS	4XS	3XS	2XS	XS	S		€ 45,60 + TAX

BODY FIT

FIXED DESIGN socks 98600046

DEXIF CUSTOM

5 PCS

SOCKS

POLYAMIDE ELASTAN: 92% POLYAMIDE - 5% COTTON - 3% ELASTAN

SR	M	L	XL	JR	XS	S
EU	39/42	43/46	47/50	EU	29/34	35/38
UK	5,5/8	8,5/11	11,5/14	UK	10,5/2	2,5/5
US	8/9,5	10/12	13/16	US	11/4	4,5/7,5

SOCKS
€ 12,55 + TAX

Price 1 pc/prezzo 1 pz

› Sateen foot in natural cotton/polyamide
› Maximum feel

› Piede rasato in cotone naturale/poliammide
› Massima sensibilità



VOLLEY BERGAMO
(ITALY) SERIE A1 FEMMINILE

INDEX

MEN VOLLEYBALL

- 18 RHODIUM ECO SHIRT
- 19 IRON SHIRT
- 19 VOID SHIRT
- 20 POLIS SHIRT
- 20 WYRM SHIRT
- 21 GOLEM SHIRT
- 21 WISP SHIRT
- 21 TOTEM SHIRT
- 22 WYVERN ECO SHIRT
- 22 ARCANO ECO SHIRT
- 23 BISMUTH HERO SHORTS
- 23 GALAX SHORTS
- 24 SKARA ECO SHORTS

WOMEN VOLLEYBALL

- 25 FROSTMOOR SHIRT
- 25 LILY ECO SHIRT
- 26 THALLIUM SHIRT
- 26 ANDURIL SHIRT
- 26 ZINC SHIRT
- 27 WIDIA ECO SHIRT
- 27 STEEL SHIRT
- 27 ZYRA SHIRT
- 28 SPHINX SHIRT
- 28 DRYAD SHIRT
- 28 NAGA SHIRT
- 29 OSMIUM HERO SHORTS
- 29 HYDROGEN HERO SHORTS
- 29 KRYPTON EVO SHORTS

KNEEPADS

- 30 POPLAR
- 30 SAGE EVO
- 31 TULIP

VOLLEYBALL BALLS

- 31 PALLADIUM
- 31 TALISMAN

MEN MATCH DAY



2062

RHODIUM ECO

ECOPERFORMANCE SYSTEM

AVAILABLE UNTIL 2028

MATCH DAY ECO SHIRT

ECO SOFTLOCK: 100% POLYESTER (RECYCLED)

SR	M	L	XL	2XL	3XL	4XL	5XL	€ 27,25 + TAX
JR	5XS	4XS	3XS	2XS	XS	S		

- › Eco micromesh inserts on shoulders, underarms and upper sides
- › Reinforced seams
- › Crew neck with piping in main fabric
- › Sleeve cuff with piping in main fabric
- › Inserti in Eco micromesh su spalle, sottomanica e parte alta fianchi
- › Cuciture rinforzate
- › Girocollo con piping in tessuto principale
- › Fondo manica con piping in tessuto principale



0100 WHITE BIANCO
0201 RED/DARK RED/WHITE ROSSO/ROSSO SCURO/BIANCO
0301 ROYAL BLUE/DARK ROYAL BLUE/WHITE BLU ROYAL/BLU ROYAL SCURO/BIANCO
0401 GREEN/DARK GREEN/WHITE VERDE/VERDE SCURO/BIANCO
0701 NAVY/LIGHT NAVY/WHITE NAVY/NAVY CHIARO/BIANCO
0901 BLACK/DARK GREY/WHITE NERO/GRIGIO SCURO/BIANCO



2052

IRON

MATCH DAY SHIRT

PERFORM + DRYTEX: 92% POLYESTER - 8% ELASTAN

SR	M	L	XL	2XL	3XL	4XL	5XL	€ 31,60 + TAX
JR	5XS	4XS	3XS	2XS	XS	S		

- › Triangular micromesh insert at the bottom of the shirt
- › Crew neck with triangular micromesh insert
- › Inserto triangolare fondo maglia in micromesh
- › Girocollo con inserto triangolare in micromesh

BODY FIT



0107 WHITE/NAVY BIANCO/NAVY
0201 RED/WHITE ROSSO/BIANCO
0301 ROYAL BLUE/WHITE BLU ROYAL/BIANCO
0701 NAVY/WHITE NAVY/BIANCO

AVAILABLE UNTIL 2026



80000455 80000454

VOID

NEW

MATCH DAY SHIRT

SOFTLIGHT: 100% POLYESTER

SR	M	L	XL	2XL	3XL	4XL	5XL	€ 16,35 + TAX
JR	5XS	4XS	3XS	2XS	XS	S		

- › Ribbed crew neck
- › Shaped shirt bottom
- › Light micromesh back
- › Girocollo in costina
- › Fondo maglia sagomato
- › Retro in light micromesh



0100 WHITE BIANCO
0200 RED ROSSO
0300 ROYAL BLUE BLU ROYAL
0400 GREEN VERDE
0500 YELLOW GIALLO
0600 PURPLE VIOLA
0700 NAVY NAVY
0900 BLACK NERO
1000 COLUMBIA CELESTE
1300 ORANGE ARANCIO
1400 CARDINAL GRANATA
1500 NEON YELLOW GIALLO FLUO
1600 NEON GREEN VERDE FLUO
1700 BOTTLE GREEN VERDE BOTTIGLIA
2100 NEON CORAL CORALLO FLUO
2700 PINK ROSA
2800 ANTHRACITE ANTRACITE
3700 NEON SKY CELESTE FLUO



5081

POLIS

MATCH DAY SHIRT

EVERTEX + MESH: 100% POLYESTER

SR	M	L	XL	2XL	3XL	4XL	5XL
JR	5XS	4XS	3XS	2XS	XS	S	

€ 20,20 + TAX

- › Ribbed crew neck
- › Mesh inserts in sides

- › Girocollo in costina
- › Inserti in mesh su fianchi

AVAILABLE UNTIL 2027



80000000

GOLEM

MATCH DAY SHIRT

SOFTLOCK + MICROMESH: 100% POLYESTER

SR	M	L	XL	2XL	3XL	4XL	5XL
JR	5XS	4XS	3XS	2XS	XS	S	

€ 26,25 + TAX

- › Crew neck with knitted front insert
- › Melange texture on the front
- › Micromesh back

- › Girocollo con inserto frontale in maglieria
- › Texture melange su fronte
- › Retro in micromesh

AVAILABLE UNTIL 2027



80000274

WISP

MATCH DAY SHIRT

SOFTLOCK + MESH: 100% POLYESTER

SR	M	L	XL	2XL	3XL	4XL	5XL
JR	5XS	4XS	3XS	2XS	XS	S	

€ 26,60 + TAX

- › Crew neck in main fabric
- › Mesh inserts in sleeves
- › Micromesh back
- › Shaped shirt bottom
- › Embossed texture on front

- › Girocollo in tessuto principale
- › Inserti in mesh su maniche
- › Retro in micromesh
- › Fondo maglia sagomato
- › Texture embossata su fronte

* Dye-sub texture on the front

* Texture sublimata su fronte

AVAILABLE UNTIL 2028



80000284

WYRM

MATCH DAY SHIRT

SOFTLIGHT + MESH: 100% POLYESTER

SR	M	L	XL	2XL	3XL	4XL	5XL
JR	5XS	4XS	3XS	2XS	XS	S	

€ 20,75 + TAX

- › Ribbed V-neck
- › Contrasting mesh inserts on sleeve
- › Light micromesh back
- › Mesh inserts
- › Shaped shirt bottom

- › Collo a "V" in costina
- › Inserti in mesh in contrasto su manica
- › Retro in light micromesh
- › Inserti in mesh
- › Fondo maglia sagomato



80000445

TOTEM

NEW

MATCH DAY SHIRT

SOFTLOCK: 100% POLYESTER

SR	M	L	XL	2XL	3XL	4XL	5XL
JR	5XS	4XS	3XS	2XS	XS	S	

€ 28,20 + TAX

- › Crew neck in main fabric
- › Contrasting mesh triangular inserts
- › Micromesh back
- › Embossed texture on front

- › Girocollo in tessuto principale
- › Inserti triangolari in mesh in contrasto
- › Retro in micromesh
- › Texture embossata su fronte

AVAILABLE UNTIL 2029





8000009

WYVERN ECO ECO PERFORMANCE SYSTEM

AVAILABLE UNTIL 2027

MATCH DAY ECO SHIRT

ECO SOFTLOCK + ECO MICROMESH: 100% POLYESTER (RECYCLED)

SR	M	L	XL	2XL	3XL	4XL	5XL	€ 40,35 + TAX
JR	5XS	4XS	3XS	2XS	XS	S		

- › Knitted V-neck with piping on front
- › Contrasting piping on sides
- › Dye-sub texture on front of shirt
- › Embossed texture on sleeves
- › Eco micromesh shirt back
- › Macron Hero logo in silicone on front

- › Collo a "V" in maglieria con piping frontale
- › Piping in contrasto su fianchi
- › Texture su fronte maglia in stampa sublimata
- › Texture embossata su maniche
- › Retro maglia in Eco micromesh
- › Logo Macron Hero in silicone su fronte



2059

BISMUTH HERO

MATCH DAY SHORTS

SOFTLOCK + MESH: 100% POLYESTER

SR	M	L	XL	2XL	3XL	4XL	5XL	€ 15,45 + TAX
JR	5XS	4XS	3XS	2XS	XS	S		

- › Flat drawstring
- › Mesh side inserts

- › Coulisse piatta
- › Inserti laterali in mesh



80000460

ARCANE ECO ECO PERFORMANCE SYSTEM **NEW**

AVAILABLE UNTIL 2029

MATCH DAY ECO SHIRT

ECO SOFTLOCK: 100% POLYESTER (RECYCLED)

SR	M	L	XL	2XL	3XL	4XL	5XL	€ 41,00 + TAX
JR	5XS	4XS	3XS	2XS	XS	S		

- › Embossed texture on sleeves
- › Shaped shirt bottom
- › Fabric sleeve cuffs
- › Eco micromesh back
- › Macron Hero logo in silicone on front
- › V-neck in bicolour knit
- › Contrast piping on sleeves
- › Sublimated front print texture

- › Texture embossata su maniche
- › Fondo maglia sagomato
- › Polsi fondo manica in tessuto
- › Retro in Eco micromesh
- › Logo Macron Hero in silicone su fronte
- › Collo a V in maglieria bicolore
- › Piping in contrasto su maniche
- › Texture in stampa sublimatica su fronte maglia



80000456

GALAX **NEW**

MATCH DAY SHORTS

SOFTLIGHT: 100% POLYESTER

SR	M	L	XL	2XL	3XL	4XL	5XL	€ 12,75 + TAX
JR	5XS	4XS	3XS	2XS	XS	S		

- › Elastic band
- › Flat drawstring

- › Fascione elasticizzato
- › Coulisse piatta





5227

SKARA ECO ECO PERFORMANCE SYSTEM

MATCH DAY ECO SHORTS

ECO SOFTLOCK + ECO MESH: 100% POLYESTER (RECYCLED)

SR	M	L	XL	2XL	3XL	4XL	5XL	€ 17,40 + TAX
JR	5XS	4XS	3XS	2XS	XS	S		

- › Eco mesh side inserts
- › Flat drawstring

- › Inserti laterali in Eco mesh
- › Coulisse piatta



0100 WHITE BIANCO	0102 WHITE/RED BIANCO/ROSSO	0103 WHITE/ROYAL BLUE BIANCO/BLUROYAL	0104 WHITE/GREEN BIANCO/VERDE	0109 WHITE/BLACK BIANCO/NERO	0200 RED ROSSO	0201 RED/WHITE ROSSO/BIANCO	0300 ROYAL BLUE BLUROYAL	0301 ROYAL BLUE/WHITE BLUROYAL/BIANCO	0305 ROYAL BLUE/YELLOW BLUROYAL/GIALLO	0400 GREEN VERDE
--------------------------------	--	--	--	---	-----------------------------	--	---------------------------------------	--	---	-------------------------------



0500 YELLOW GIALLO	0700 NAVY NAVY	0900 BLACK NERO	0901 BLACK/WHITE NERO/BIANCO	0902 BLACK/RED NERO/ROSSO	1000 COLUMBIA CELESTE	1213 ELECTRIC BLUE/ORANGE BLUELETRICO/ARANCIO	1400 CARDINAL GRANATA	2800 ANTHRACITE ANTRACITE	3800 TURQUOISE TURCHESE
---------------------------------	-----------------------------	------------------------------	---	--	------------------------------------	--	------------------------------------	--	--------------------------------------

WOMEN MATCH DAY

WOMAN FIT



80000467

FROSTMOOR NEW

MATCH DAY SLEEVESLESS SHIRT

SOFTLIGHT: 100% POLYESTER

SR	M	L	XL	2XL	3XL	4XL	5XL	€ 18,00 + TAX
JR	5XS	4XS	3XS	2XS	XS	S		

- › Ribbed V-neck
- › Contrast mesh inserts on shoulders, front and back
- › Light micromesh back
- › Triangular contrast mesh inserts on hem
- › Shaped shirt bottom

- › Collo a "V" in costina
- › Inserti mesh in contrasto su spalle fronte e retro
- › Retro in light micromesh
- › Inserti mesh triangolari in contrasto su fondo maglia
- › Fondo maglia sagomato

AVAILABLE UNTIL 2029



0109 WHITE/BLACK BIANCO/NERO	0201 RED/WHITE ROSSO/BIANCO	0301 ROYAL BLUE/WHITE BLUROYAL/BIANCO	0701 NAVY/WHITE NAVY/BIANCO	0901 BLACK/WHITE NERO/BIANCO
---	--	--	--	---

WOMAN FIT



80000294

LILY ECO ECO PERFORMANCE SYSTEM

MATCH DAY SLEEVESLESS SHIRT

ECO PERFORM + ECO MESH: 88% POLYESTER - 12% ELASTAN

SR	M	L	XL	2XL	3XL	4XL	5XL	€ 37,80 + TAX
JR	5XS	4XS	3XS	2XS	XS	S		

- › V-neck in main fabric
- › Tone-on-tone side inserts in Eco-light micromesh
- › Contrasting shoulder inserts in Eco-light micromesh
- › Side vents
- › Macron Hero logo in silicone on front

- › Collo a "V" in tessuto principale
- › Inserti laterali tono su tono in Eco-light micromesh
- › Inserti su spalle in contrasto in Eco-light micromesh
- › Spacchetti laterali
- › Logo Macron Hero in silicone

AVAILABLE UNTIL 2028



0123 WHITE/SILVER BIANCO/ARGENTO	0201 RED/WHITE ROSSO/BIANCO	0301 ROYAL BLUE/WHITE BLUROYAL/BIANCO	0401 GREEN/WHITE VERDE/BIANCO	0701 NAVY/WHITE NAVY/BIANCO
---	--	--	--	--

WOMAN FIT



2050
THALLIUM
MATCH DAY SLEEVELESS SHIRT

PERFORM + MICROMESH: 92% POLYESTER - 8% ELASTAN

SR	M	L	XL	2XL	3XL	4XL	5XL	€ 37,80 + TAX
JR	5XS	4XS	3XS	2XS	XS	S		

- › V-neck
- › Narrow shoulder
- › Micromesh side inserts
- › Tone on tone dye-sub texture on the front
- › Contrasting elastic tape on front
- › Collo a "V"
- › Spalla stretta
- › Inserti fianchi in micromesh
- › Texture melange su fronte in stampa sublimata tono su tono
- › Tape elastico su fronte in contrasto

BODY FIT



WOMAN FIT



2063
WIDIA ECO ECO PERFORMANCE SYSTEM
MATCH DAY ECO SHIRT


ECO SOFTLOCK: 100% POLYESTER (RECYCLED)

SR	M	L	XL	2XL	3XL	4XL	5XL	€ 27,25 + TAX
JR	5XS	4XS	3XS	2XS	XS	S		

- › Eco micromesh inserts on shoulders, underarms and upper sides
- › Reinforced seams
- › Crew neck with piping in main fabric
- › Sleeve cuff with piping in main fabric
- › Inserti in Eco micromesh su spalle, sottomanica e parte alta fianchi
- › Cuciture rinforzate
- › Girocollo con piping in tessuto principale
- › Fondo manica con piping in tessuto principale



WOMAN FIT



80000468
ANDURIL NEW
MATCH DAY SHIRT

SOFTLIGHT: 100% POLYESTER

SR	M	L	XL	2XL	3XL	4XL	5XL	€ 20,75 + TAX
JR	5XS	4XS	3XS	2XS	XS	S		

- › Ribbed V-neck
- › Light micromesh back
- › Triangular contrast mesh inserts on hem
- › Shaped shirt bottom
- › Contrast mesh inserts on shoulders, front and back
- › Collo a "V" in costina
- › Retro in light micromesh
- › Inserti mesh triangolari in contrasto su fondo maglia
- › Fondo maglia sagomato
- › Inserti mesh in contrasto su spalle fronte e retro



WOMAN FIT



2065
STEEL ECO ECO PERFORMANCE SYSTEM
MATCH DAY ECO SHIRT

ECO PERFORM + ECO MICROMESH: 90% POLYESTER - 10% ELASTAN


SR	M	L	XL	2XL	3XL	4XL	5XL	€ 38,15 + TAX
JR	5XS	4XS	3XS	2XS	XS	S		

- › V-neck with contrasting piping
- › Light micromesh inserts in sides and shoulders
- › Contrasting piping on front yoke
- › Sleeve cuff with piping in main fabric
- › Silicone Macron Hero logo
- › Collo a "V" con piping in contrasto
- › Inserti fianchi e spalle in light micromesh
- › Piping in contrasto su carrè davanti
- › Fondo manica con piping in tessuto principale
- › Logo Macron Hero in silicone

BODY FIT



WOMAN FIT



2064
ZINC
MATCH DAY SHIRT


SOFTLOCK: 100% POLYESTER

SR	M	L	XL	2XL	3XL	4XL	5XL	€ 26,00 + TAX
JR	5XS	4XS	3XS	2XS	XS	S		

- › V-neck with contrasting piping
- › Light micromesh inserts in sides and shoulders
- › Contrasting piping on front yoke
- › Collo a "V" con piping in contrasto
- › Inserti fianchi e spalle in light micromesh
- › Piping in contrasto su carrè davanti



WOMAN FIT

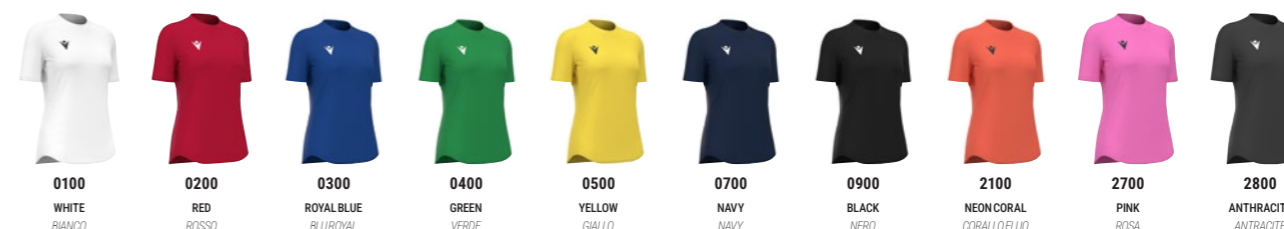


80000457
ZYRA NEW
MATCH DAY SHIRT

SOFTLIGHT: 100% POLYESTER

SR	M	L	XL	2XL	3XL	4XL	5XL	€ 16,35 + TAX
JR	5XS	4XS	3XS	2XS	XS	S		

- › Ribbed crew neck
- › Shaped shirt bottom
- › Light micromesh back
- › Girocollo in costina
- › Fondo maglia sagomato
- › Retro in light micromesh



WOMAN FIT



8000001

SPHINX

MATCH DAY SHIRT

SOFTLOCK + MICROMESH: 100% POLYESTER

SR	M	L	XL	2XL	3XL	4XL	5XL
JR	5XS	4XS	3XS	2XS	XS	S	

€ 26,25 + TAX

AVAILABLE UNTIL 2027

- › Crew neck with knitted front insert
- › Melange texture on the front
- › Micromesh back

- › Girocollo con inserto frontale in maglieria
- › Texture melange su fronte
- › Retro in micromesh



0201 RED/WHITE ROSSO/BIANCO
0301 ROYAL BLUE/WHITE BLUROYAL/BIANCO
0701 NAVY/WHITE NAVY/BIANCO
0901 BLACK/WHITE NERO/BIANCO
2128 NEON CORAL/ANTHRACITE CORALLO FLUO/ANTRACITE

WOMAN FIT



80000275

DRYAD

MATCH DAY SHIRT

SOFTLOCK + MESH: 100% POLYESTER

SR	M	L	XL	2XL	3XL	4XL	5XL
JR	5XS	4XS	3XS	2XS	XS	S	

€ 26,60 + TAX

AVAILABLE UNTIL 2028

- › Crew neck in main fabric
- › Mesh inserts in sleeves and sides
- › Micromesh back
- › Shaped shirt bottom
- › Embossed texture on front

- › Girocollo in tessuto principale
- › Inserti in mesh su maniche
- › Retro in micromesh
- › Fondo maglia sagomato
- › Texture embossata su fronte



0200 RED/DARK RED ROSSO/ROSSO SCURO
0300 ROYAL BLUE/DARK ROYAL BLUE BLUROYAL/BLUROYAL SCURO
0700 NAVY/LIGHT NAVY NAVY/NAVY CHIARO
0900 BLACK/DARK GREY NERO/GRIGIO SCURO
4028 LILAC/ANTHRACITE LILLA/ANTRACITE

WOMAN FIT



80000446

NAGA NEW

MATCH DAY SHIRT

SOFTLOCK: 100% POLYESTER

SR	M	L	XL	2XL	3XL	4XL	5XL
JR	5XS	4XS	3XS	2XS	XS	S	

€ 28,20 + TAX

AVAILABLE UNTIL 2029

- › Crew neck in main fabric
- › Contrasting mesh triangular inserts
- › Micromesh back
- › Embossed texture on front

- › Girocollo in tessuto principale
- › Inserti triangolari in mesh in contrasto
- › Retro in micromesh
- › Texture embossata su fronte



0201 RED/WHITE ROSSO/BIANCO
0701 NAVY/WHITE NAVY/BIANCO
0901 BLACK/WHITE NERO/BIANCO
4228 STONE GREY/ANTHRACITE GRIGIO PIETRA/ANTRACITE
4307 INDIGO SKY/NAVY DIELO INDIGO/NAVY

WOMAN FIT



2060

OSMIUM HERO

MATCH DAY SHORTS

HYDROTEX: 100% POLYESTER

SR	M	L	XL	2XL	3XL	4XL	5XL
JR	5XS	4XS	3XS	2XS	XS	S	

€ 14,30 + TAX

- › Inside leg inserts
- › Flatlock seams

- › Inserti interno gamba
- › Cuciture piatte



03 ROYAL BLUE BLUROYAL
07 NAVY NAVY
09 BLACK NERO

WOMAN FIT



2245

HYDROGEN HERO

MATCH DAY SHORTS

COTTON ELASTIC FREE: 93% COTTON - 7% ELASTAN

SR	M	L	XL	2XL	3XL	4XL	5XL
JR	5XS	4XS	3XS	2XS	XS	S	

€ 20,20 + TAX

- › Inside leg inserts
- › Flatlock seams

- › Inserti interno gamba
- › Cuciture piatte

SKINNY FIT



03 ROYAL BLUE BLUROYAL
07 NAVY NAVY
09 BLACK NERO

WOMAN FIT



2424

KRYPTON EVO HERO

MATCH DAY SHORTS

ESPANTEX HQ LIGHT: 92% POLYESTER - 8% ELASTAN

SR	M	L	XL	2XL	3XL	4XL	5XL
JR	5XS	4XS	3XS	2XS	XS	S	

€ 28,95 + TAX

SKINNY FIT



02 RED ROSSO
03 ROYAL BLUE BLUROYAL
07 NAVY NAVY
09 BLACK NERO

VOLLEYBALL
BASKETBALL
ATHLETICS
RACKET SPORTS
HANDBALL
BASEBALL
CRICKET
GOLF
OTHER
TRAVEL
TECHNICAL UNDERWEAR
ACTIVEWEAR
FREE TIME
ATHLEISURE ICONS
JACKETS
ACCESSORIES

KNEEPADS AND BALLS



2013 POPLAR KNEEPADS

AVAILABLE UNTIL **2027**

45% POLYESTER - 30% POLYAMIDE - 12% POLYURETHANE - 8% RUBBER - 5% COTTON

SR	M	L	XL	2XL	3XL	4XL	5XL	€ 39,45 + TAX
JR	5XS	4XS	3XS	2XS	XS	S		

- › Professional knee-pad
- › Symmetrical wearability
- › High density polyurethane preformed padding with a layer of polyethylene foam that ensures maximum protection for the knee-cap and the entire joint capsule

- › *Ginocchiera professionale*
- › *Vestibilità simmetrica*
- › *Imbottitura preformata in PU ad alta densità con uno strato di polietilene espanso che assicurano la massima salvaguardia della rotula e di tutta la capsula articolare*



80000347 SAGE EVO KNEEPADS

35% POLYESTER - 30% ETHYLENE VINIL ACETATE (EVA) - 25% POLYAMIDE - 10% ELASTAN

SR	M	L	XL	2XL	3XL	4XL	5XL	€ 28,40 + TAX
JR	5XS	4XS	3XS	2XS	XS	S		



2076 TULIP KNEEPADS

6 PCS

65% POLYESTER - 18% POLYPROPYLENE - 12% POLYURETHANE - 5% POLYAMIDE

SR	M	L	XL	2XL	3XL	4XL	5XL	€ 13,80 + TAX	Price 1 pc/prezzo 1 pz
JR	5XS	4XS	3XS	2XS	XS	S			

- › Training knee-pad
- › Symmetrical wearability

- › *Ginocchiera training*
- › *Vestibilità simmetrica*

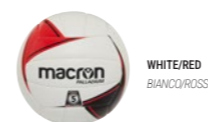


N. 5 5910251 PALLADIUM VOLLEYBALL BALL

12 PCS

SURFACE: POLYURETHANE SOFT TOUCH
CONSTRUCTION: HAND SEWN

N. 5	65-67 CM	260-280 GR	€ 22,00 + TAX	Price 1 pc/prezzo 1 pz
------	----------	------------	---------------	------------------------



01 WHITE/RED
BIANCO/ROSSO



N. 1 800005100001

TALISMAN MINI BALL

NEW

12 PCS

SURFACE: 100% TPU

N. 1	42-44 CM	130-150 GR	€ 12,30 + TAX	Price 1 pc/prezzo 1 pz
------	----------	------------	---------------	------------------------



01 WHITE
BIANCO